



Hematopoiesis

Dr. Heba Kalbouneh
Associate Professor of Anatomy and Histology

Blood Cell Formation (Hematopoiesis)

Mature blood cells have a relatively short life span and must be continuously replaced with new cells from precursors developing during hemopoiesis/ hematopoiesis (Gr. haima, blood + poiesis, a making).

Early embryo

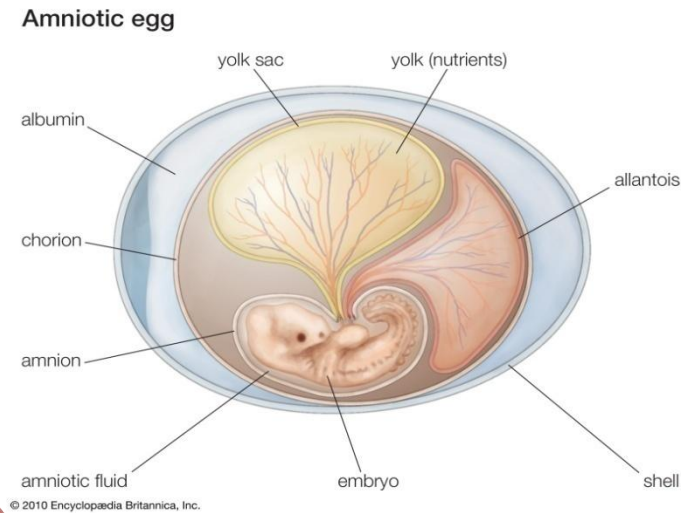
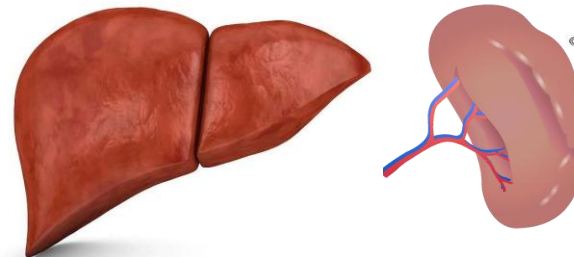
Yolk sac mesoderm

Second trimester

Developing liver and spleen

Third trimester

Bone marrow



After birth, all blood cells originate in bone marrow

Bone marrow

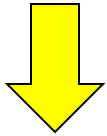
The red bone marrow is a highly cellular structure that is located in the medullary cavities of the bone

It consists of:

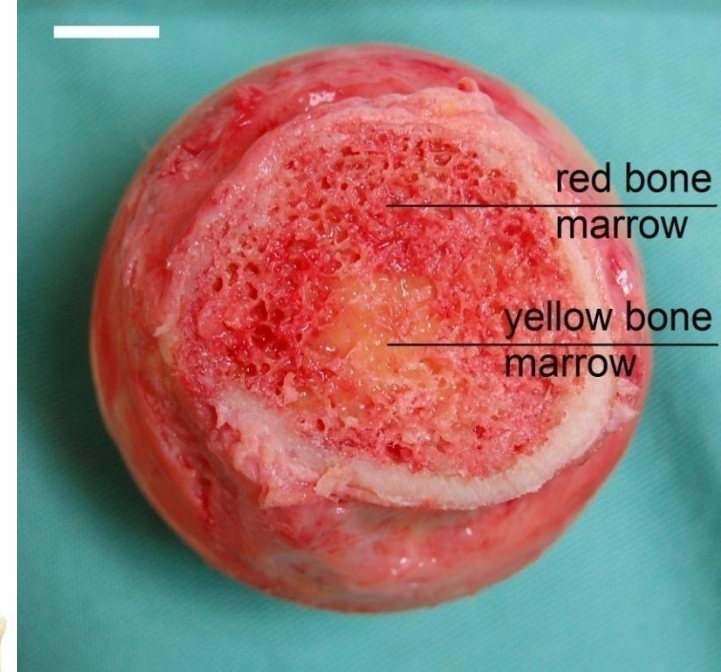
Hemopoietic stem cells

(the origin of different blood cells)

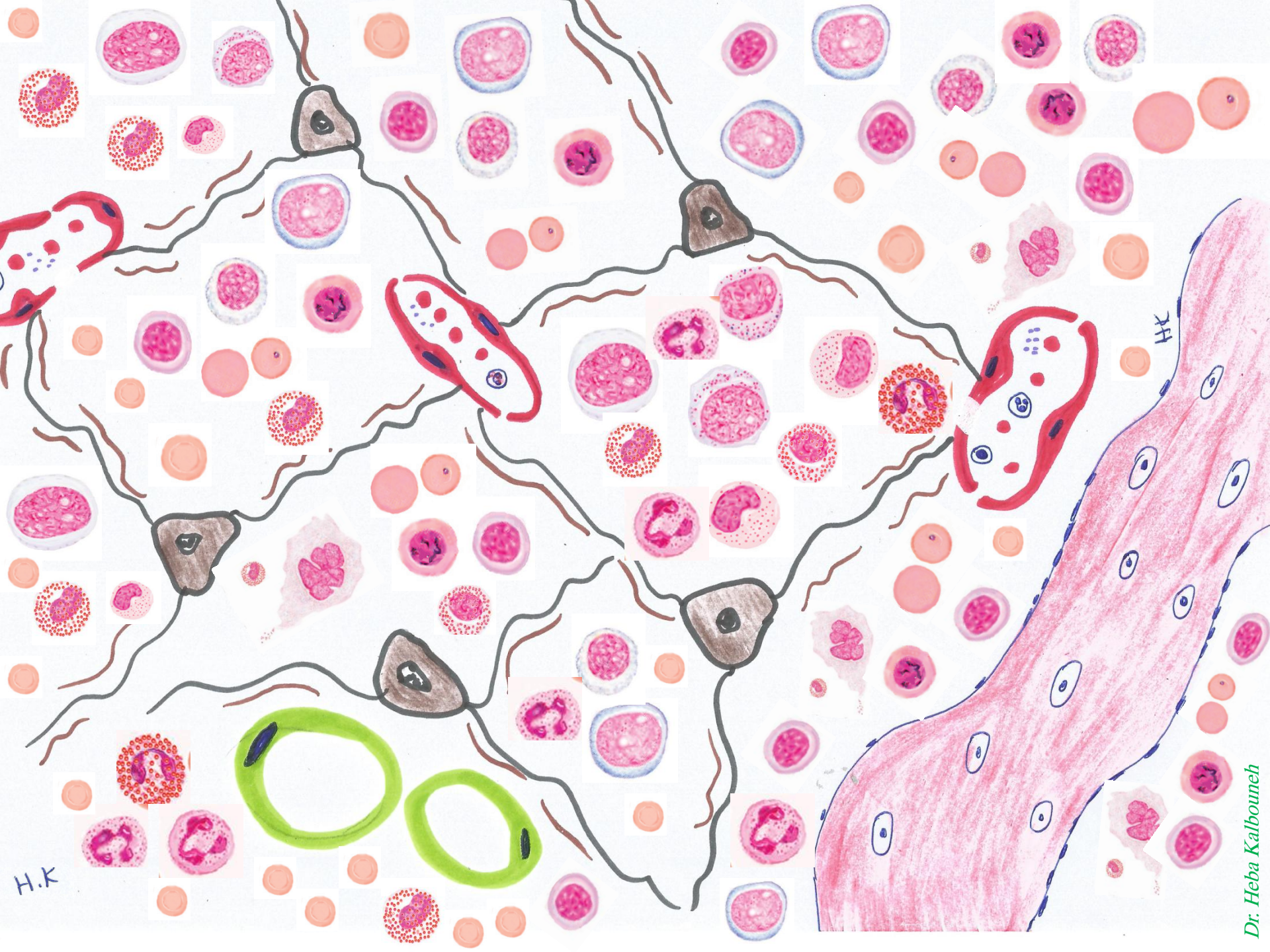
surrounded by numerous macrophages and sinusoidal capillaries and supported by a reticular tissue.



As the individual ages and becomes an adult, the red marrow is found primarily in the axial skeleton (flat bones of the skull, sternum and ribs, vertebrae, and pelvic Bones). The remaining bones, primarily the long bones in the limbs of the body, gradually accumulate fat, and their marrow becomes yellow. Consequently, they lose the hemopoietic functions.

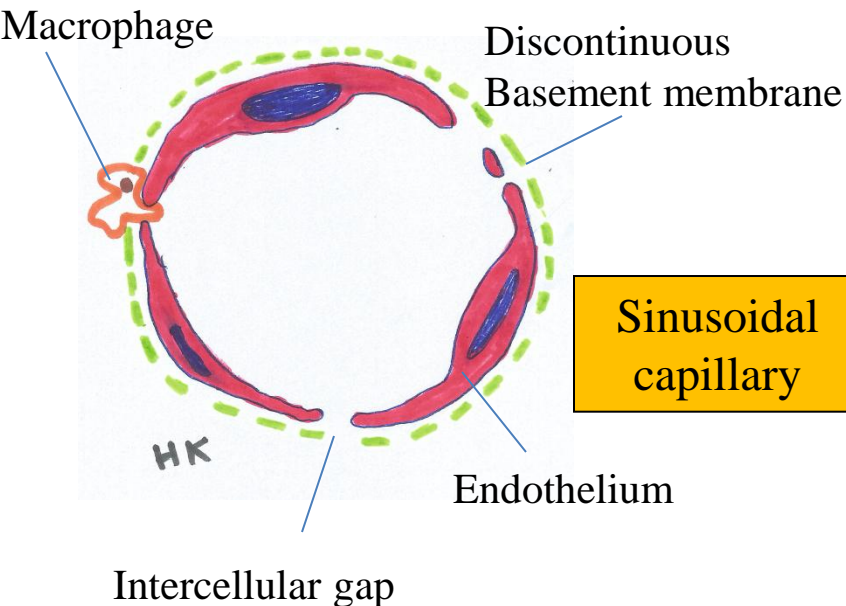


Under certain conditions (severe bleeding or hypoxia), yellow marrow reverts to red



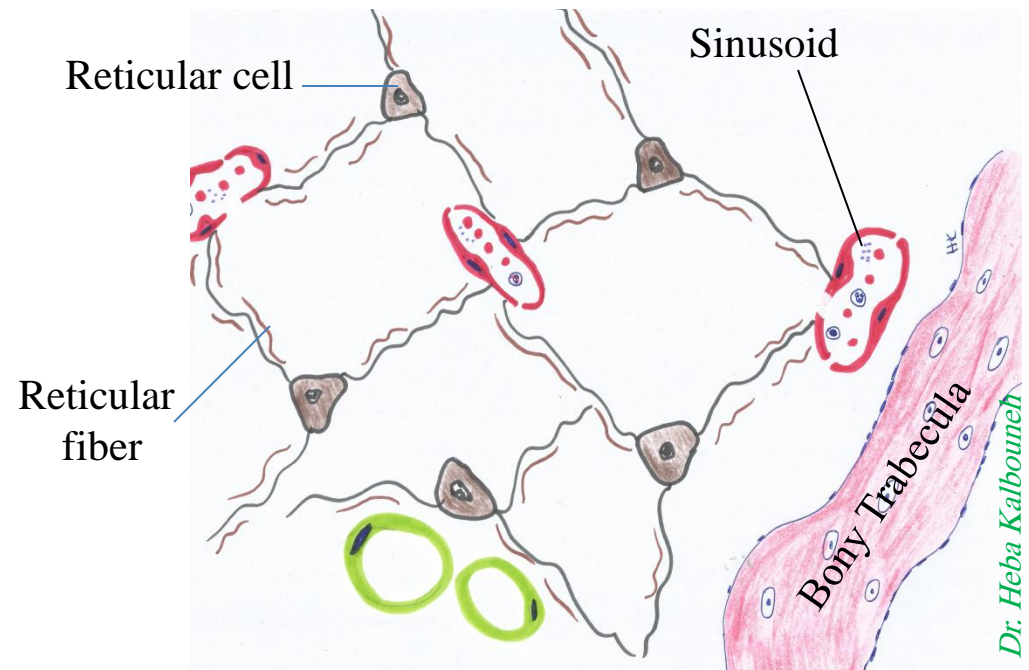
H.K

Dr. Heba Kalbouneh

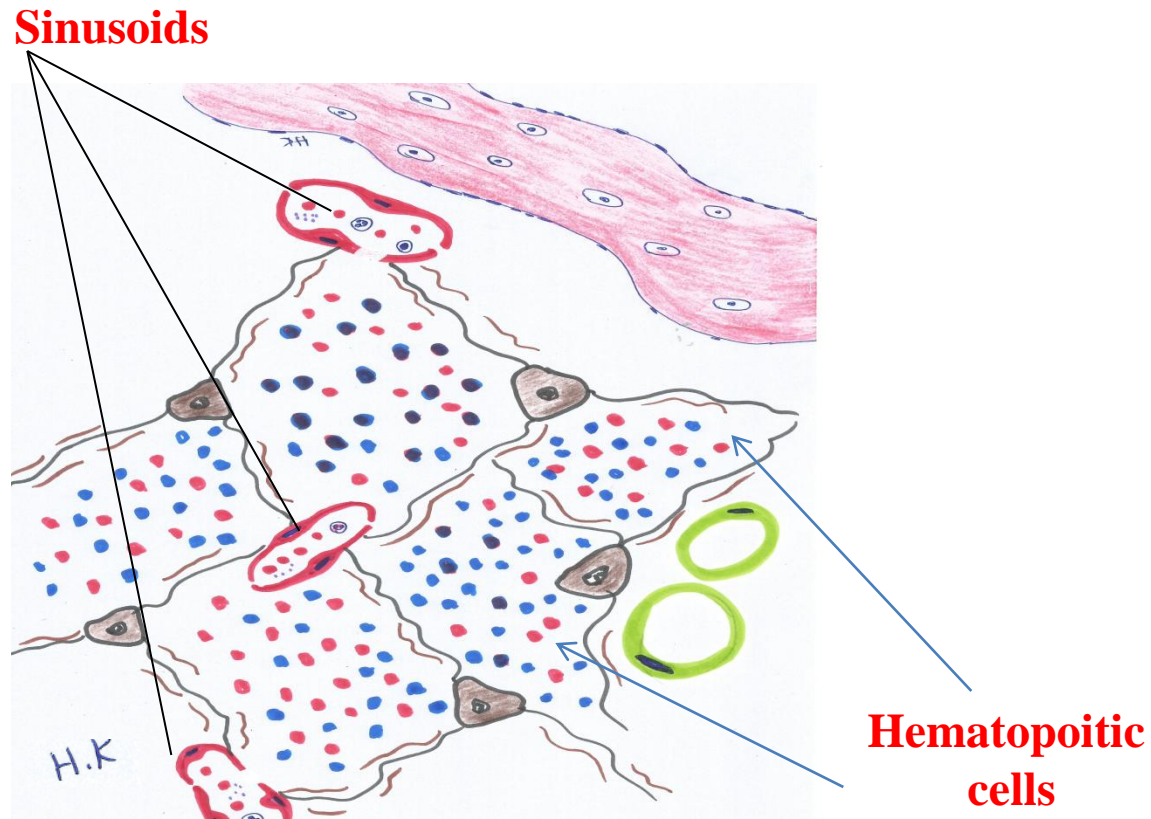


Continuous capillary

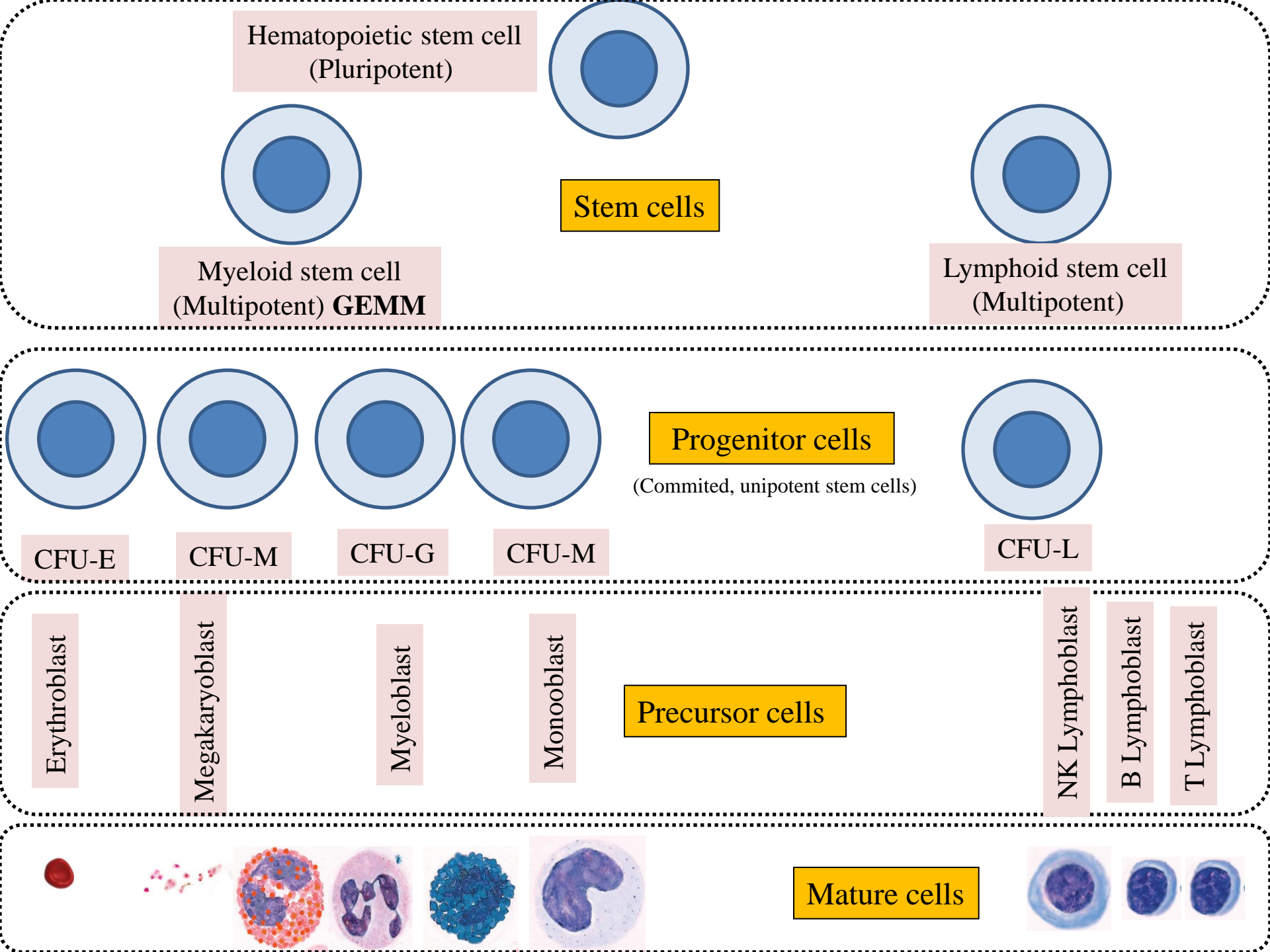
Reticular tissue forming the stroma of the bone marrow



Between the hematopoietic cells run the **sinusoids**, which have discontinuous endothelium, through which newly differentiated blood cells and platelets enter the circulation

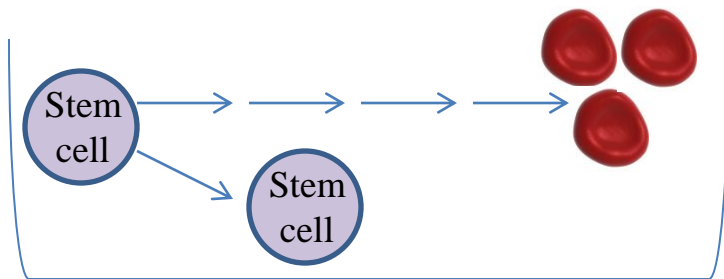


Red marrow is also a site where older, defective erythrocytes undergo phagocytosis by macrophages, which then reprocess heme-bound iron for delivery to the differentiating erythrocytes.



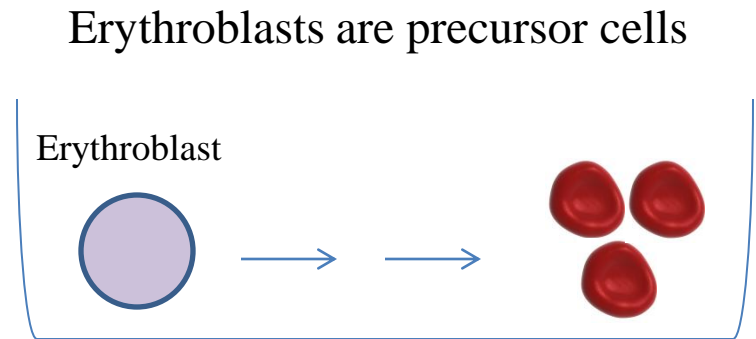
Stem cells are capable of asymmetric division and self-renewal.

Stem cells can maintain the original population



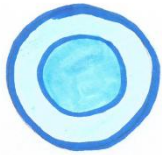
Every time the stem cell multiplies, it will give two cells, one differentiate into mature RBCs and the other cell add to the original population

Precursor cells produce only mature blood cells



All Erythroblasts multiply and differentiate into mature RBCs (erythrocytes) and **no** erythroblasts are left in the end

Hematopoietic pluripotent stem cells

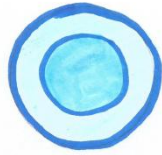
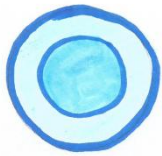


Note:

Stem cells and progenitor cells cannot be morphologically distinguished and resemble **lymphocytes**

Myeloid stem cells

Lymphoid stem cells



Rate of cell division:

Slow in Stem cells

Rapid in progenitor and precursor cells

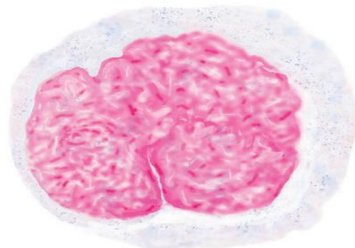
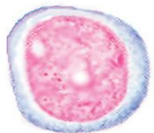
Progenitor cells/ CFUs



All progenitor cells (CFUs) produce precursor cells (or blasts)

Precursor cells/ Blasts

Selected precursors of different blood cells



Precursor cells gradually assume the morphologic characteristics of the mature, functional cell types they will become

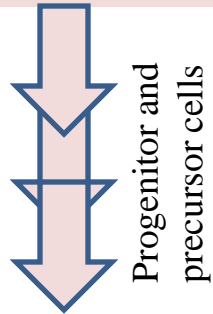
Pluripotent hematopoietic stem cells

All blood cells arise from a single type of stem cell in the bone marrow called pluripotent stem cell

It can produce ALL BLOOD CELL TYPES

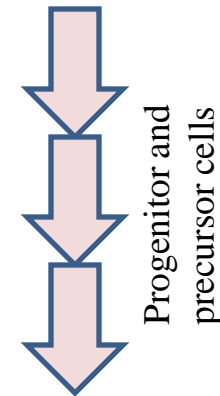
It proliferates and forms two major cell lineages

Myeloid stem cells



Granulocytes
-Neutrophils
-Basophils
-Eosinophils
Erythrocytes
Megakaryocytes
Monocytes

Lymphoid stem cells



T lymphocyte
B lymphocyte
Natural killer cells

Note: pre T-cells (precursor T cells, T lymphoblasts) migrate to the thymus where they proliferate and differentiate.

Pluripotent hematopoietic stem cells

Myeloid stem cells

Lymphoid stem cells

CFU Erythrocyte
CFU-E

CFU Granulocyte-
Monocyte
CFU-GM

CFU Megakaryocyte
CFU-M

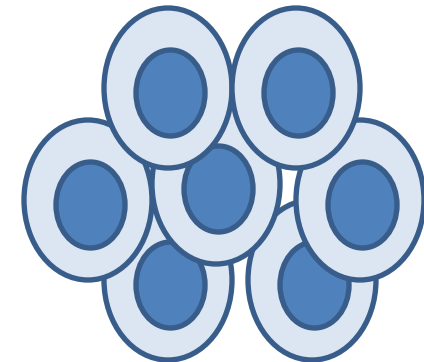
CFU Monocyte
CFU-M

CFU Granulocyte
CFU-G

CFU Lymphocyte
CFU-L

Progenitor cells/ CFUs

The progenitor cells for blood cells are often called **colony forming units (CFUs)**, because they give rise to colonies of only one cell type when cultured in vitro or injected into a spleen.



Blood Cell Formation (Hematopoiesis)

Throughout childhood and adult life, erythrocytes, granulocytes, monocytes, and platelets continue to form from stem cells located in bone marrow

Important & required

Erythropoiesis: the process which produces erythrocytes

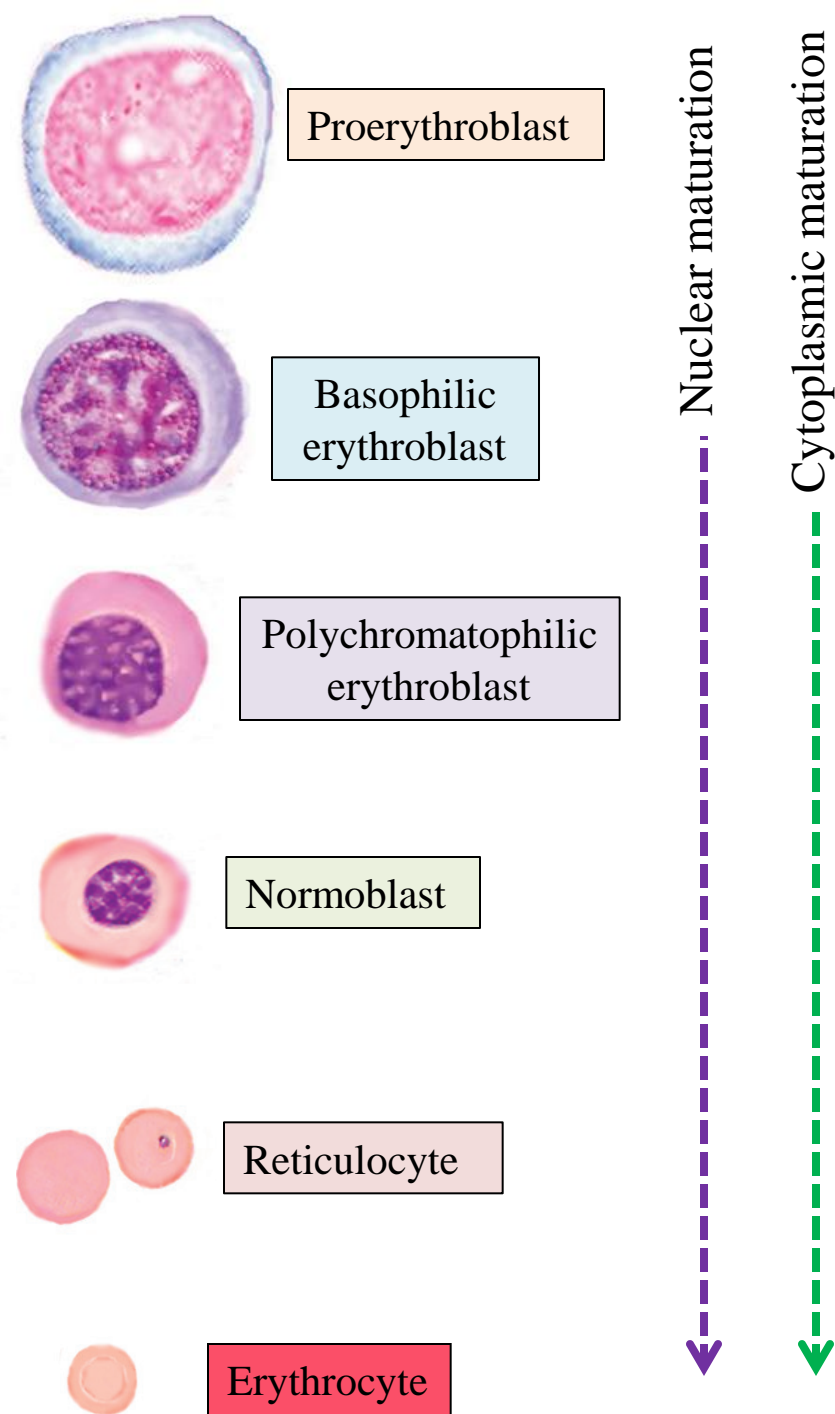
Granulopoiesis: the process which produces granulocytes

Thrombopoiesis: the process which produces thrombocytes

Lymphopoiesis: the process which produces lymphocytes

Monocytopoiesis: the process which produces monocytes

Remember
Lymphopoiesis occurs in the marrow and in the lymphoid organs to which precursor cells migrate from marrow.



Erythropoiesis (red cell formation)

- ✓ Takes about 1 week
- ✓ Rate is controlled by the hormone erythropoietin (secreted by the kidney cells) and the availability of iron, folic acid, vitamin B12, protein precursors

Stages of differentiation are characterized by:

- 1- Decreasing cell size
- 2- Progressive loss of organelles

Presence of free ribosomes at early stages

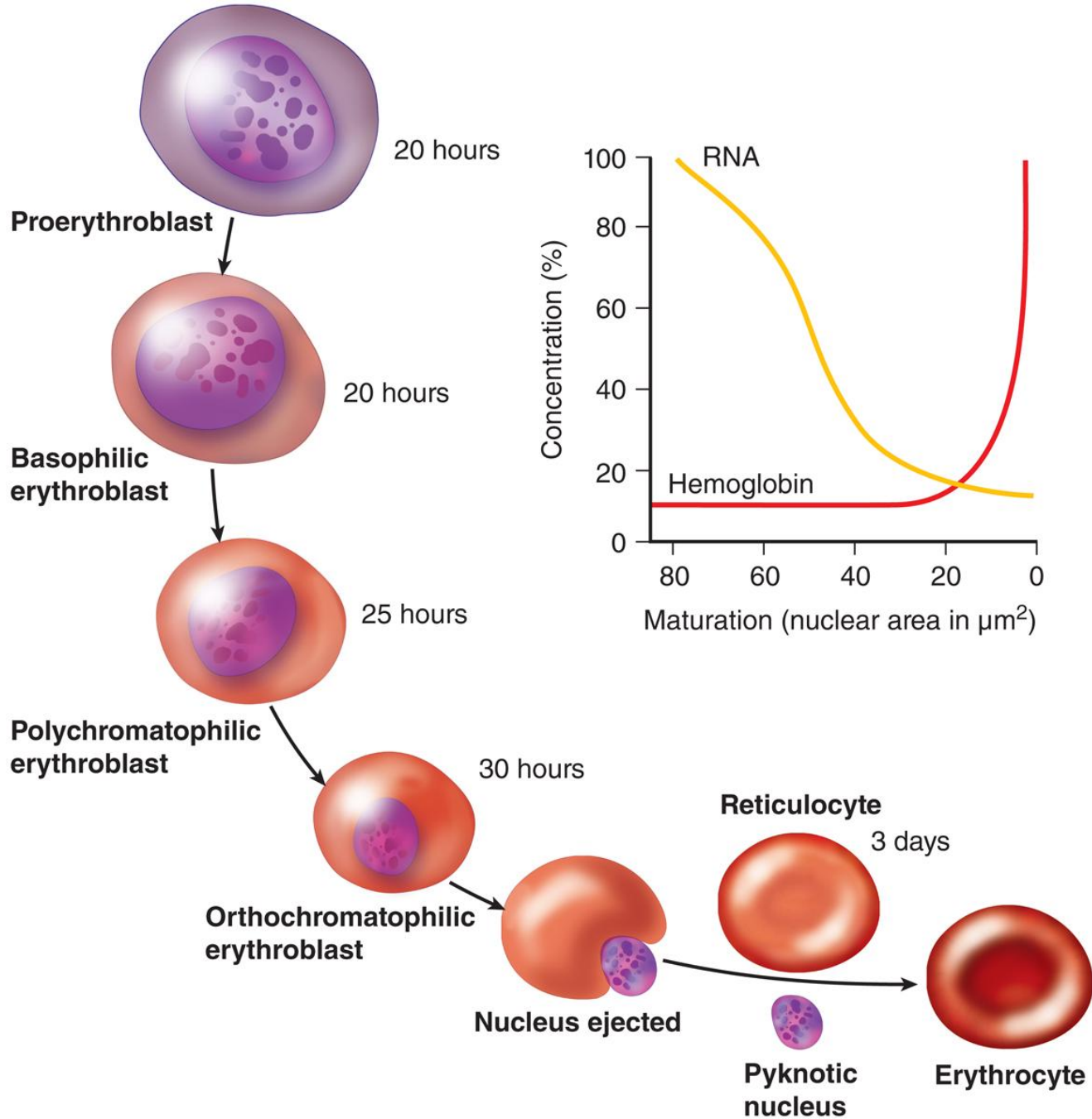


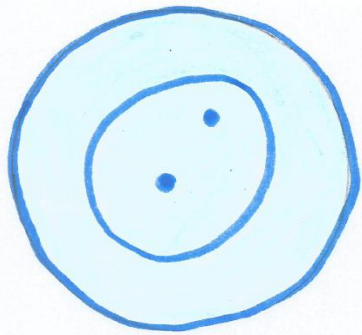
Accounts for the marked cytoplasmic basophilia (**blue**)

- 3- Progressive increase in hemoglobin content



Accounts for increasing eosinophilia (**pink/red**)

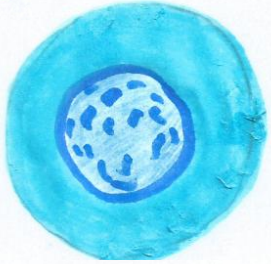




Proerythroblast

- ✓ The first recognizable erythrocyte precursor
- ✓ Largest cell (17um)
- ✓ Large pale nucleus with prominent nucleolus
- ✓ Pale basophilic cytoplasm

H.K



Basophilic erythroblast

- ✓ The cell becomes smaller (15um)
- ✓ Nucleus: smaller and darker
- ✓ Deeply basophilic cytoplasm (high in ribosomes)



Polychromatophilic erythroblast

- ✓ The cell becomes smaller (13um)
- ✓ Nucleus: smaller and darker
- ✓ Cytoplasm becomes violet
- ✓ (takes basic (ribosomes) and acidic stains (Hb))



Normoblast (Acidophilic erythroblast!!!)

- ✓ The cell becomes smaller (11um)
- ✓ Nucleus: smaller, darker and eccentric to be expelled outside
- ✓ Cytoplasm is acidophilic (Hb)

The nucleus is extruded at this stage



Reticulocyte

- ✓ Immature erythrocyte but slightly larger (9um)
- ✓ No nucleus
- ✓ Cytoplasm is acidophilic (Hb) but contains remnants of ribosomes forming reticulum



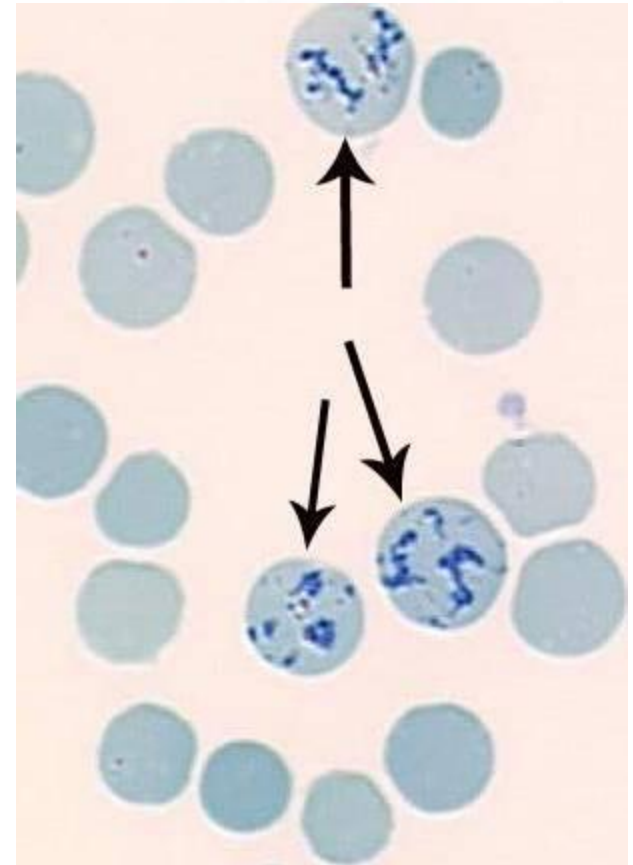
Erythrocyte

- ✓ Can be stained by supravital stains (brilliant cresyl blue)

Reticulocytes

- Are immature red blood cells (last stage)
- The cell has extruded its nucleus, but is still capable of producing hemoglobin
- Supravital dye: precipitation of reticulum in the cytoplasm (brilliant cresyl blue)
- Normally, only about 1% of all red blood cells in the bloodstream are reticulocytes
- They circulate for about 1-2 days before developing into mature red blood cells
- An increase in reticulocytes ---- blood loss (hemorrhage)

Very important



Granulopoiesis (Neutrophils, Eosinophils and Basophils formation)

✓ Takes about 2 weeks

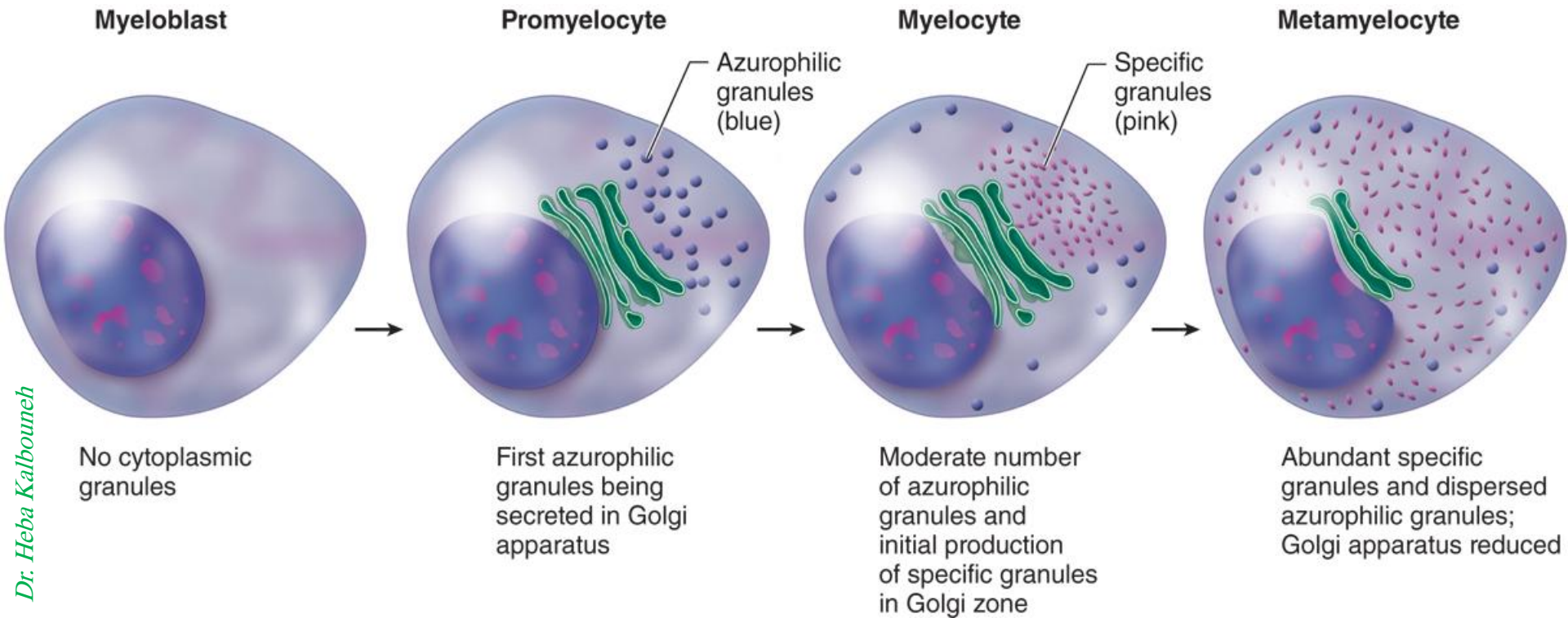
Stages of differentiation are characterized by:

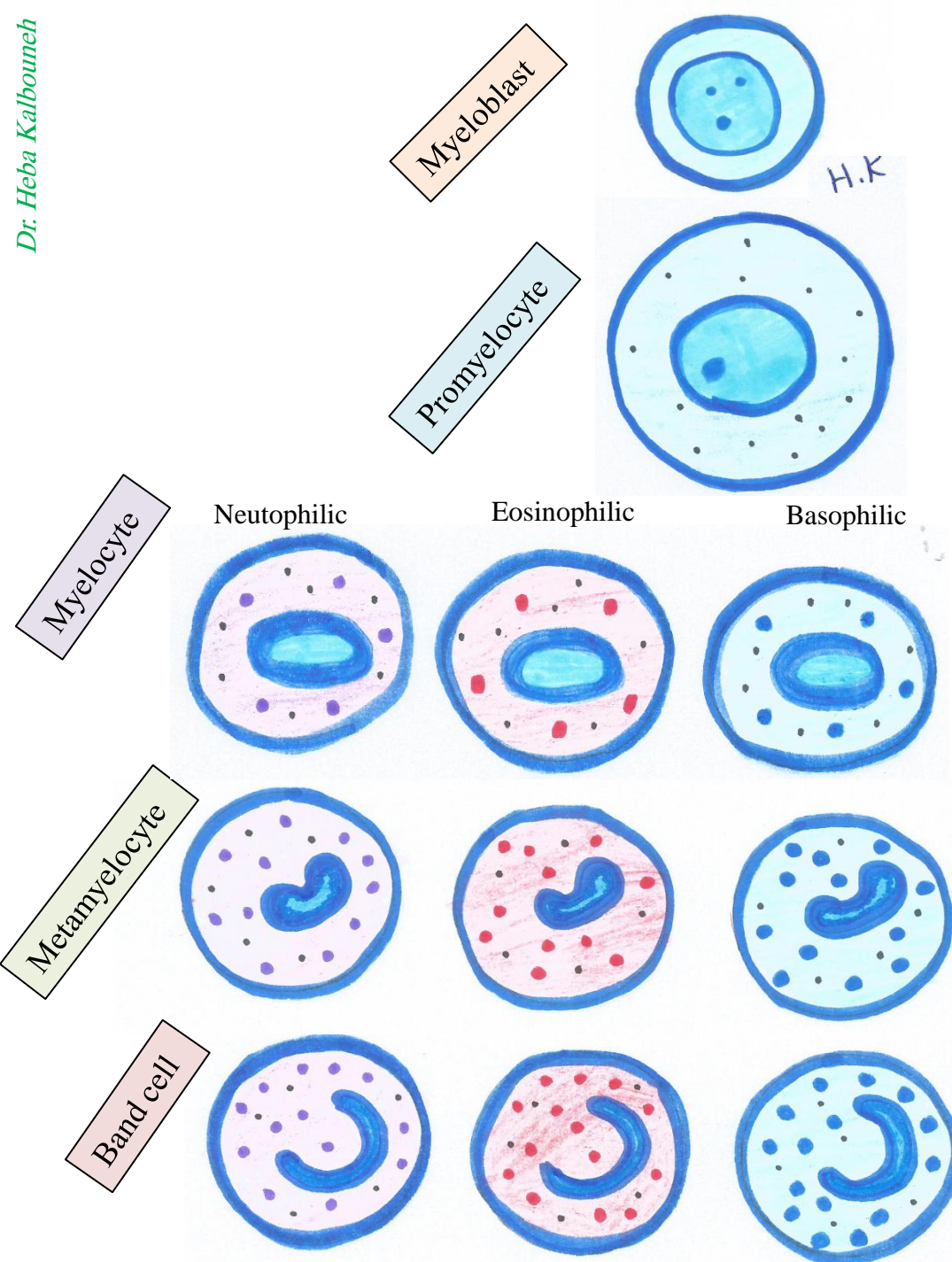
1- Cytoplasmic changes dominated by synthesis of azurophilic granules and specific granules.



- First**, formation of the azurophilic granules (similar in all three types of granulocytes)
- Second**, formation of the specific granules (differ in each of the three types of granulocytes)

2- Condensation, indentation and segmentation of the nucleus





Myeloblast

- ✓ The first recognizable precursor

Promyelocyte

- ✓ The largest (20um)
- ✓ Azurophilic granules start to appear

Myelocyte

- ✓ 3 types
- ✓ The cell becomes smaller
- ✓ The nucleus becomes smaller and darker
- ✓ Specific granules start to appear

Metamyelocyte

- ✓ 3 types
- ✓ Cannot divide
- ✓ Undergoes metamorphosis
- ✓ Nucleus becomes indented (kidney shaped)
- ✓ Specific granules increase in number

Band cell (stab cell)

- ✓ 3 types
- ✓ Nucleus becomes curved rod in shape

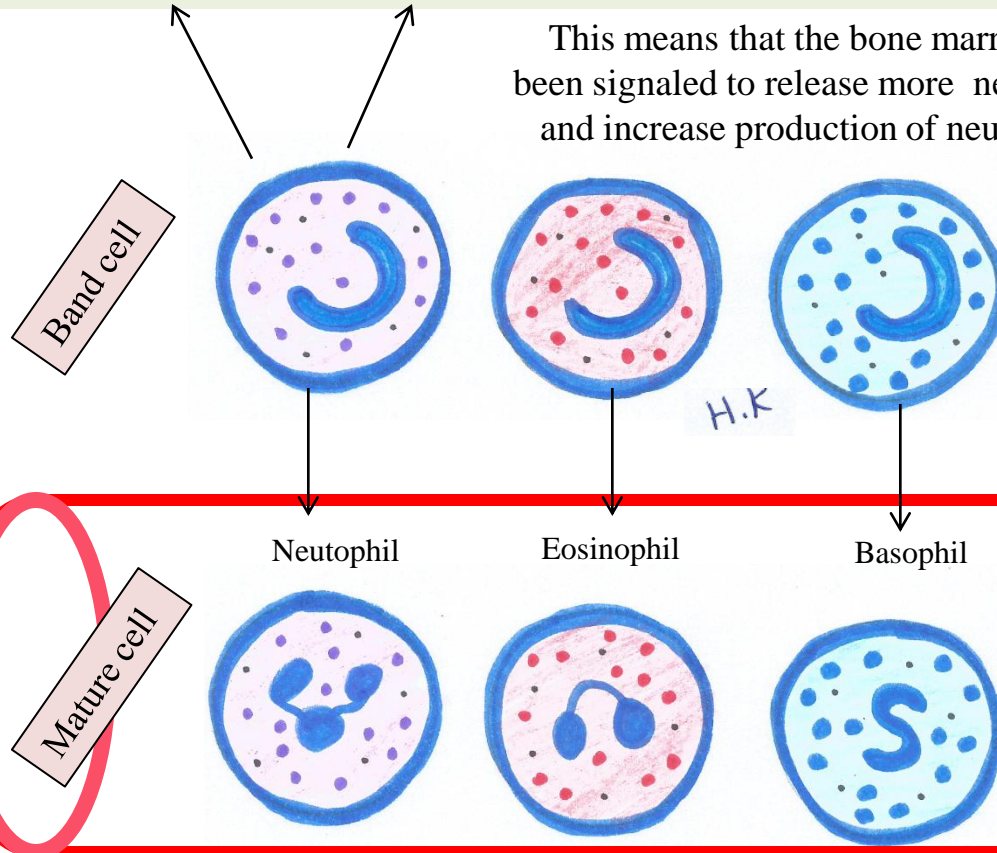
Neutrophilic band cells (important)

Their percentage does not exceed 5% in peripheral blood

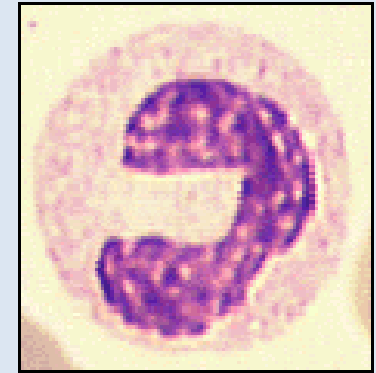


The appearance of large numbers of immature neutrophils (band cells) in the blood, sometimes called a “shift to the left,” is clinically significant, usually indicating a **bacterial infection**.

This means that the bone marrow has been signaled to release more neutrophils and increase production of neutrophils

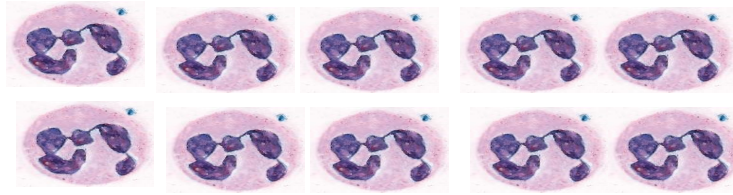


Band cell is almost a mature neutrophil, just doesn't have a segmented nucleus yet

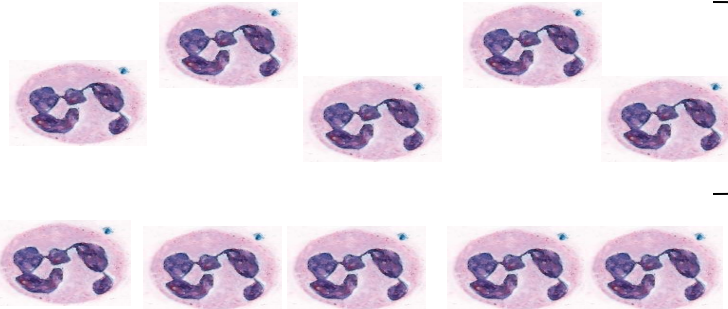


Bone marrow pool

Myeloblast
Promyelocyte
Myelocyte
Metamyelocyte
Band cell
Neutrophil



Circulating pool



Marginating pool

Developing and mature neutrophils exist in **four functionally and anatomically defined compartments:**

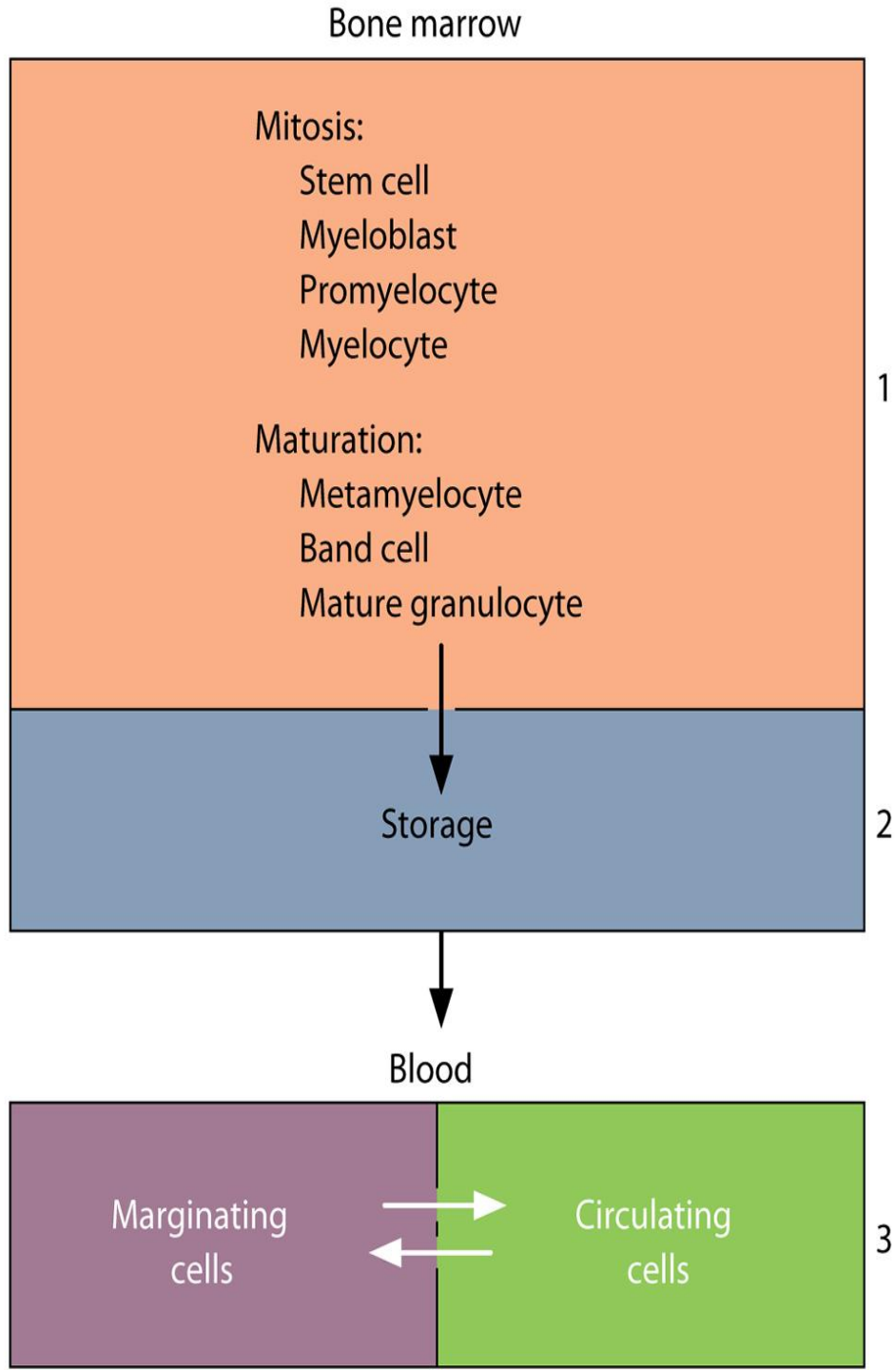
- (1) The granulopoietic compartment in active marrow
- (2) Storage as mature cells in marrow until release
- (3) The circulating population
- (4) A population undergoing margination



Margination is a process in which neutrophils adhere loosely and accumulate transiently along the endothelial surface in venules and small veins.

Note: Margination of neutrophils in some organs can persist for several hours and is not always followed by the cells' emigration from the microvasculature.

Dr. Heba Kalbouneh



At sites of injury or infection, neutrophils and other granulocytes enter the connective tissues by migrating through intercellular junctions between endothelial cells of postcapillary venules in diapedesis.



Inflamed connective tissues thus form a fifth terminal compartment for neutrophils, where the cells reside for a few days and then die by apoptosis, regardless of whether they have performed their major function of bacterial phagocytosis.

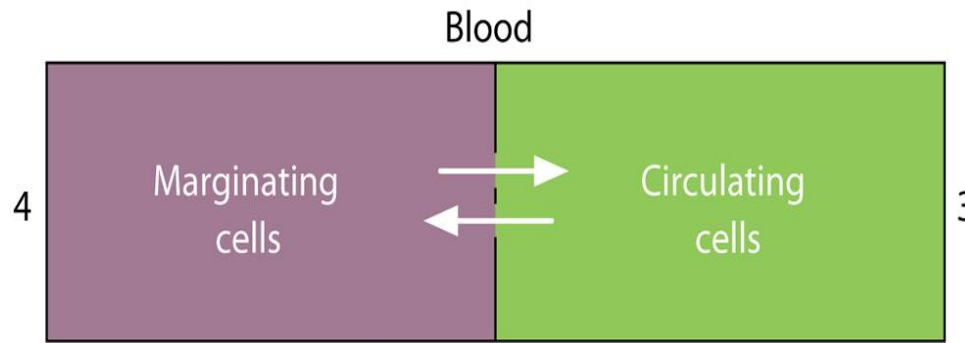
Changes in the number of neutrophils in the blood must be evaluated by taking all their compartments into consideration.



Thus, neutrophilia (an increase in the number of circulating neutrophils) does not necessarily imply an increase in granulopoiesis.



Intense muscular activity or the administration of epinephrine can cause neutrophils in the marginating compartment to move into the circulating compartment, producing neutrophilia even though granulopoiesis has not increased. However, glucocorticoids (adrenal hormones) such as cortisone increase the mitotic activity of neutrophil precursors and this also increases the blood count of neutrophils.



How many RBCs are in 1 ul of peripheral blood?

5 million/ul

How many WBCs are in 1 ul of peripheral blood?

4500-11000/ul

But in the bone marrow (myeloid tissue)!!!

Myeloid: Erythroid

3:1

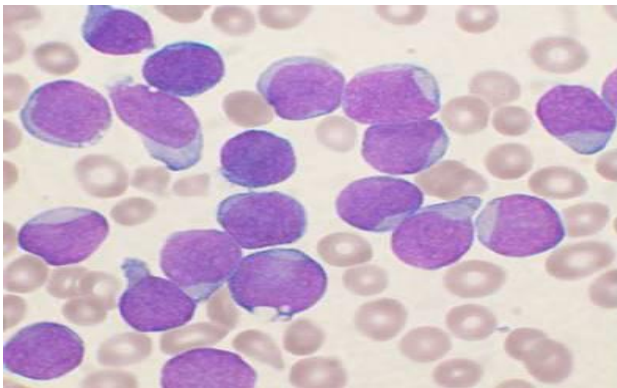
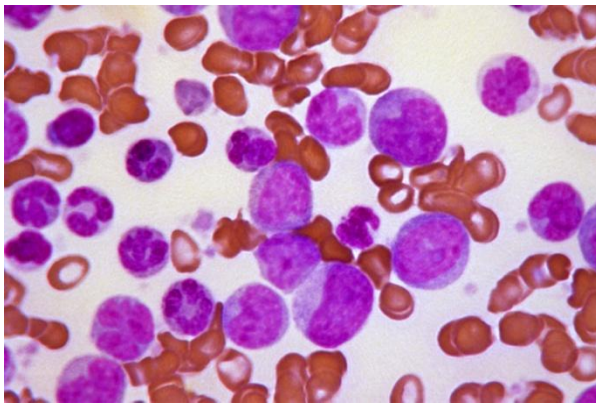
Remember the life span!!!!

White blood cell abnormalities

Increased numbers of white cells appear in the peripheral blood in a variety of disorders and provide a useful clue to the underlying disease.

A considerable and sustained increase of circulating **neutrophils** in **bacterial infection**

An increase of circulating **eosinophils** in **parasitic infection and some allergies**

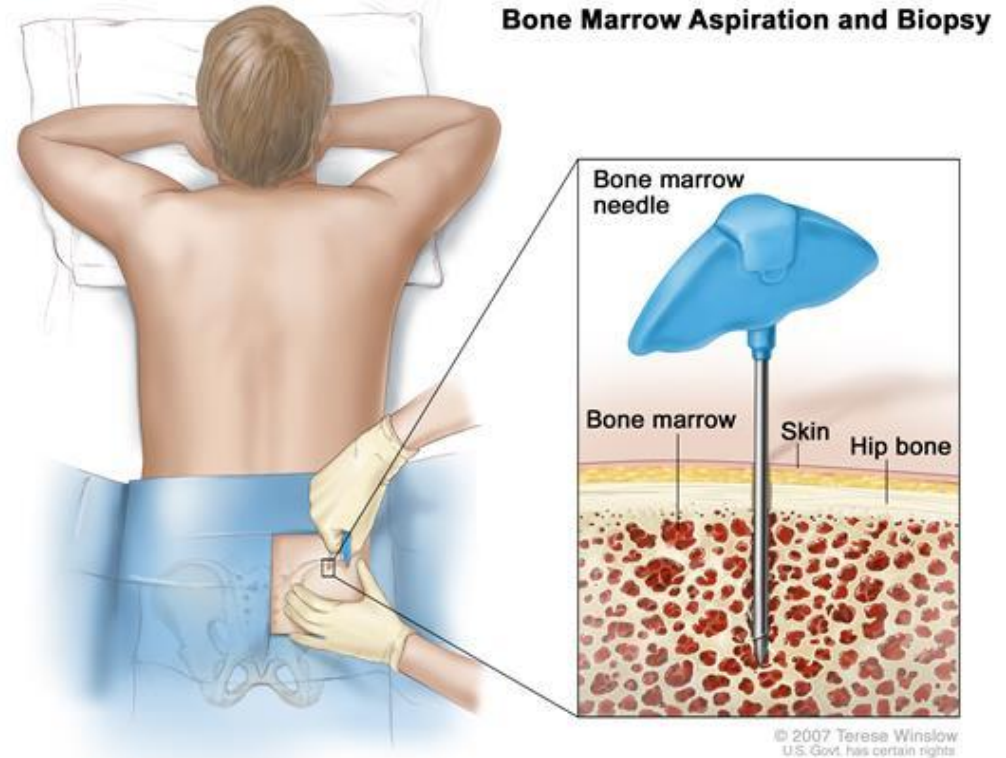


Leukemia is a malignant proliferation of white cell precursors in the bone marrow



Vast number of white cells and their precursors (many of which spill over into the blood)
Leukemia is classified according to the cell line involved (granulocytic, monocytic, lymphocytic)

Bone marrow Aspiration or biopsy
Needed to diagnose disorders like aplastic anemia or leukemia

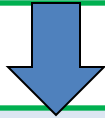


Bone marrow transplantation

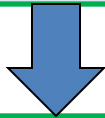
In bone marrow diseases like leukemia, hematopoietic stem cells taken from a donor are infused into the same or another person

Thrombopoiesis

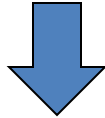
Hematopoietic pluripotent stem cell



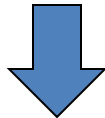
Myeloid stem cell



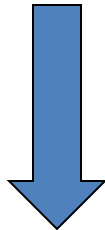
Colony forming unit- megakaryocyte



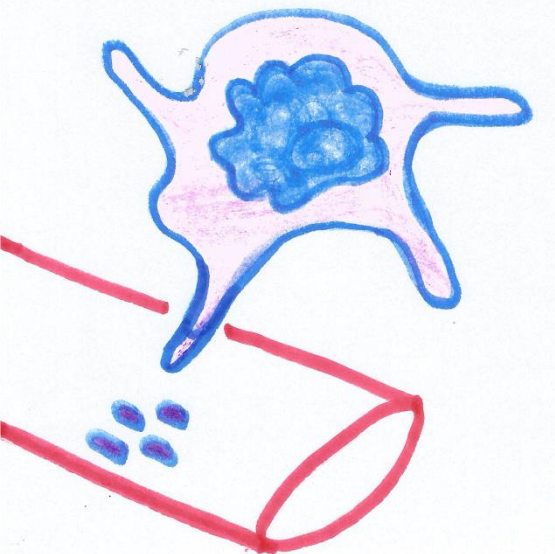
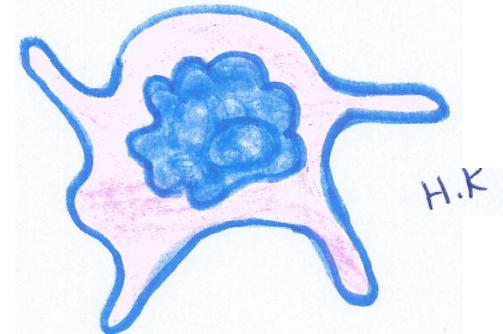
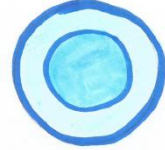
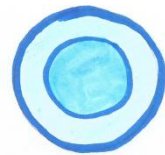
Megakaryoblast



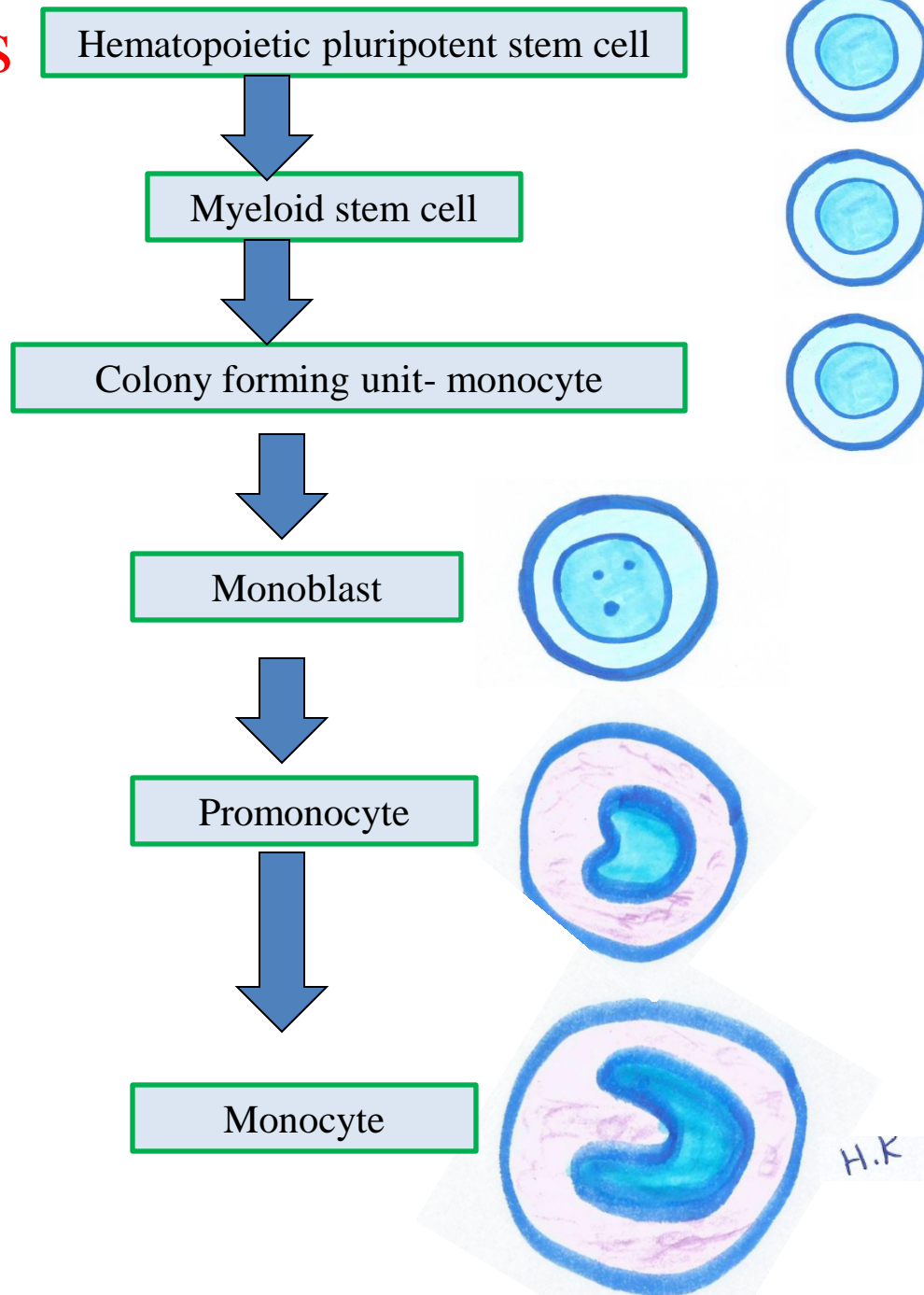
Promegakaryocyte



Megakaryocyte

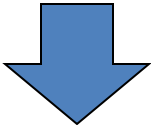


Monocytopoiesis

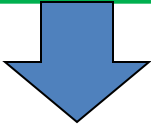


Lymphopoiesis

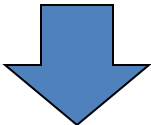
Hematopoietic pluripotent stem cell



Lymphoid stem cell



Lymphocyte colony forming cell



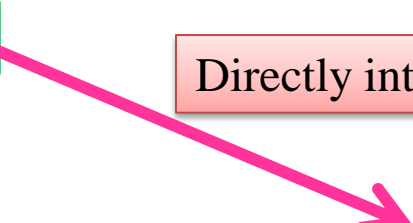
Lymphoblast

Thymus



T Lymphocyte

Directly into blood

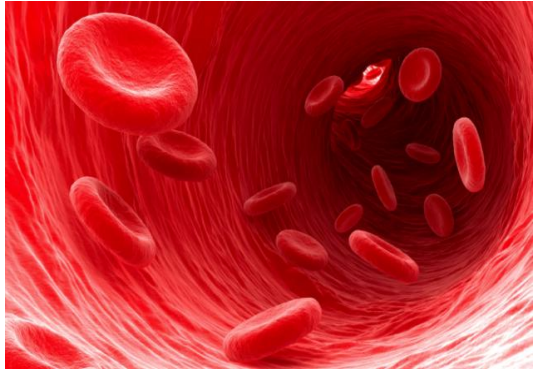
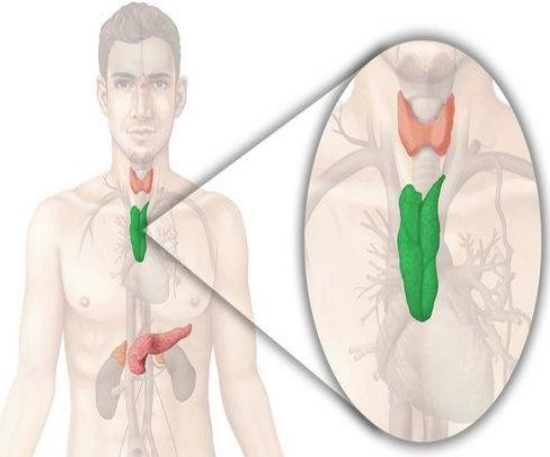


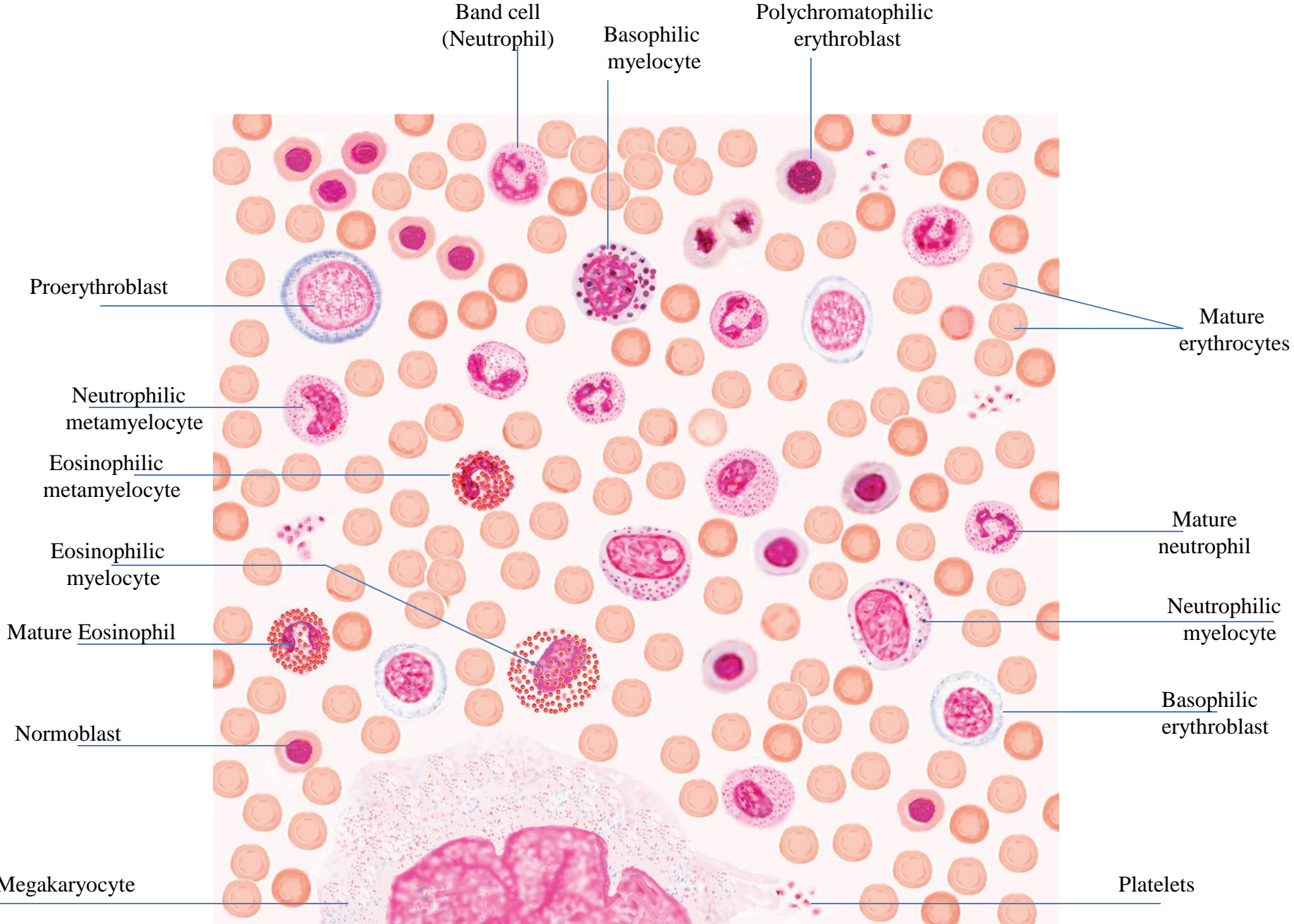
Natural killer lymphocyte

BM



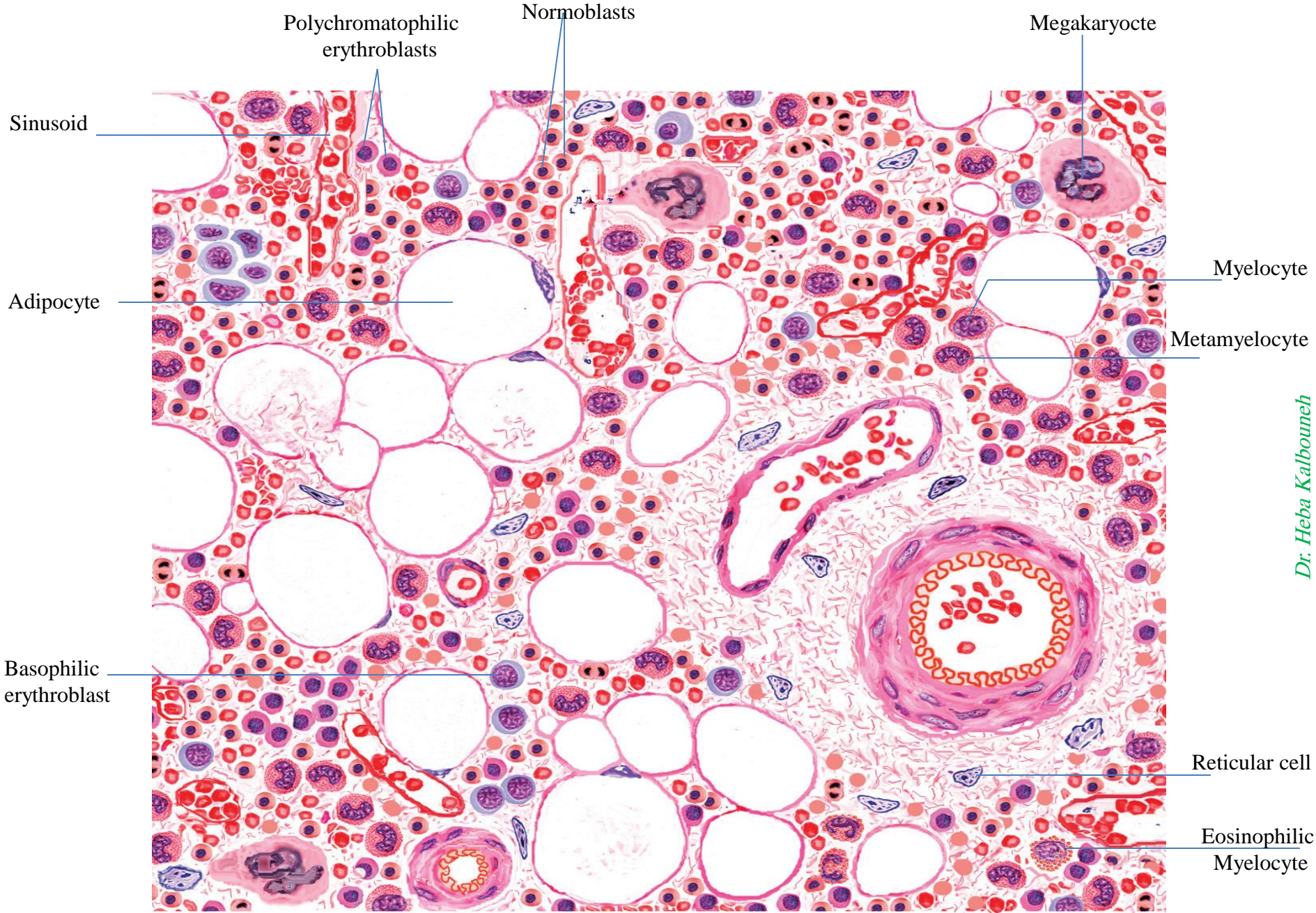
B Lymphocyte





Bone marrow (Giemsa stain)

Dr. Heba Kalbouneh



Dr. Heba Kalbouneh

Bone marrow (H&E)

Hemopoietic growth factors (colony stimulating factors (CSF) or cytokines) are glycoproteins that stimulate proliferation of progenitor and precursor cells and promote cell differentiation and maturation within specific lineages.

Erythropoiten
Thrombopoiten
CSF-G



Cloning of the genes for several important hematopoietic growth factors has significantly advanced study of blood formation and permitted the production of clinically useful factors for patients with hemopoietic disorders.

