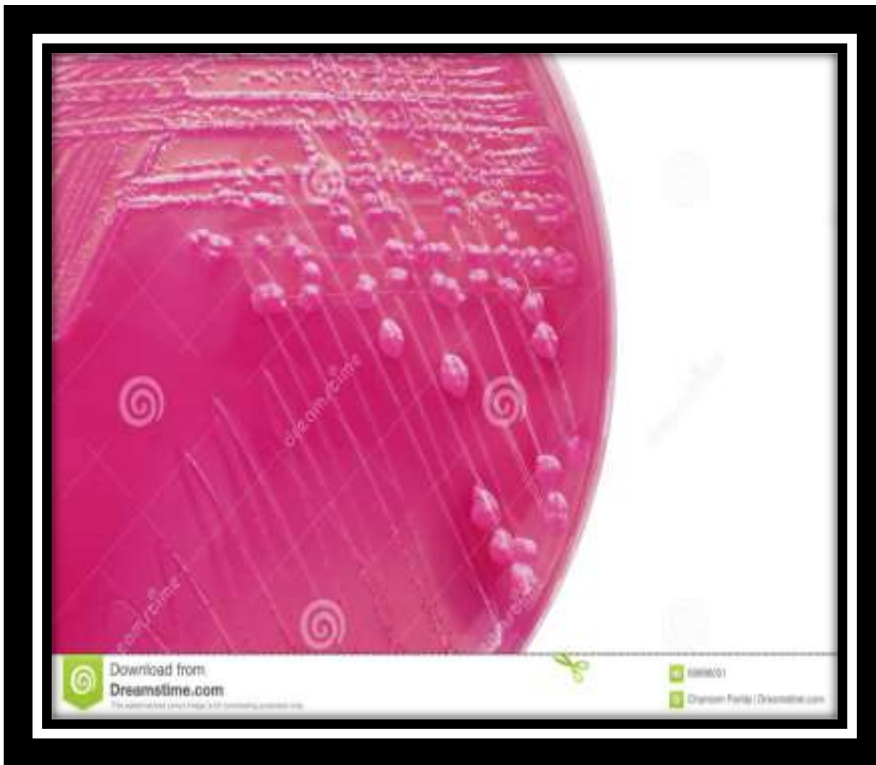


Gram Negative Bacteria



1. Escherichia coli (E.coli)



2. Klebsiella

- Large ***mucoïd*** poly saccharide capsule .



3. Enterobacter

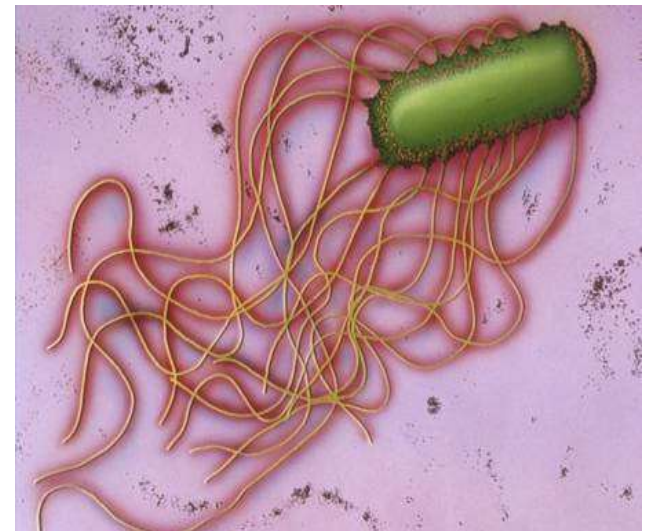


4. Citrobacter



Proteus

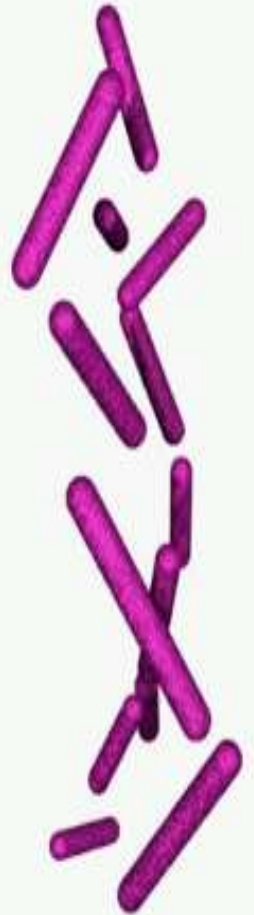
- Gram negative rods, non lactose fermenter
- **Swarming motility (flagellated)**
- Prevent swarming by culturing it on CLED or MacConkey media



Pseudomonas aeruginosa

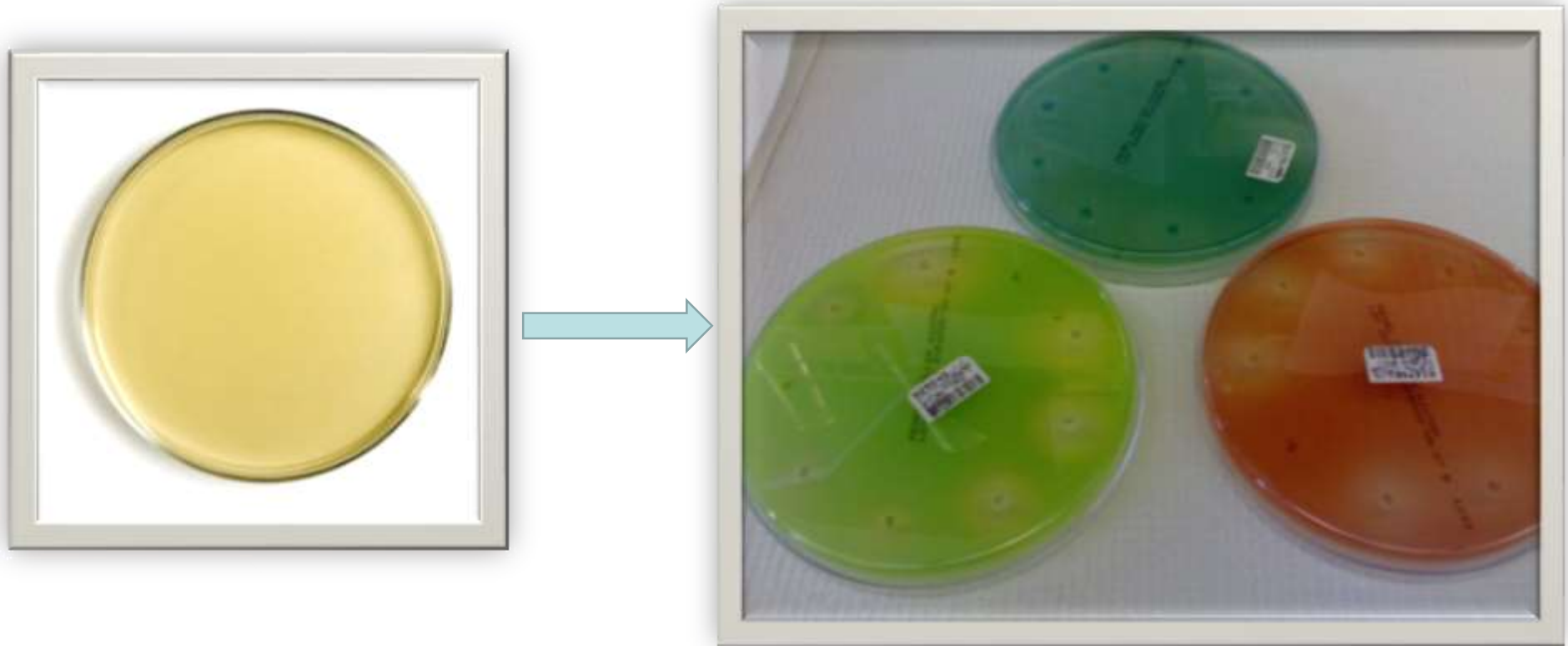
Identified by :

- **Gram negative rod** 
- **odor** : grape-like smell.
- Oxidase positive.
- Produce different pigments colors:
 - **Pyocyanine (blue-green)**
 - **Pyoverdinin (fluorescent yellow –greenish pigment).**
 - **Pyorubrin (red).**
 - **Pyomelanin (brown).**



*Pseudomonas
aeruginosa*

Pseudomonas aeruginosa on mueller hintion agar





**Thank you
Any Question ??**